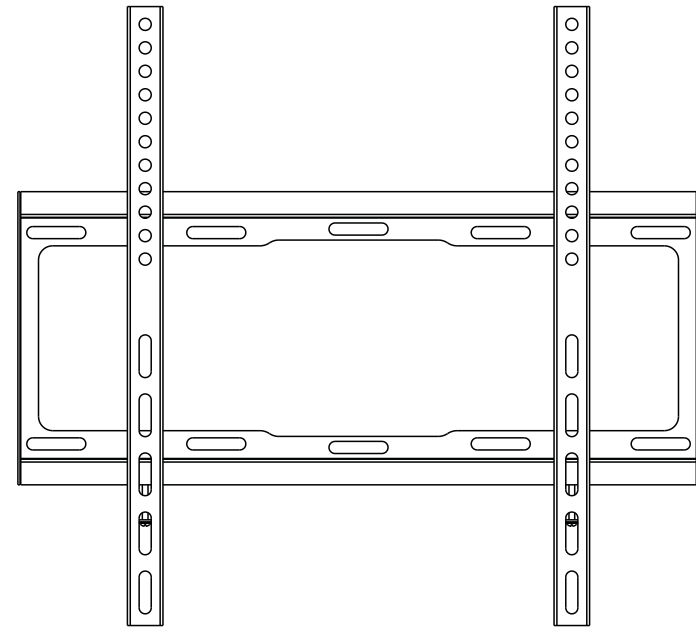


FLAT-PANEL TV WALL MOUNT

 **Cable Matters** INSTALLATION MANUAL

 **Cable Matters**



If any items are missing or damaged,
please contact support@cablematters.com



CAUTION: DO NOT EXCEED RATED LISTED WEIGHT CAPACITY. SERIOUS INJURY OR PROPERTY DAMAGE MAY OCCUR!

www.cablematters.com

106001



200x200
300x300
400x200
400x400



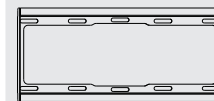
NOTE: Read the entire instruction manual before you start installation and assembly.

WARNING

- Use with products heavier than the rated weights indicated may result in injury or damage to property. Check the VESA rating of your TV.
- The TV Mount must be installed and used **ONLY** as specified in this manual. Improper installation may result in injury or damage to property.
- Safety gear, proper tools, and assistance in lifting and placement of the equipment must be used.
- Installers should fully understand the manual, have good mechanical ability and basic building experience.
- If mounting to wood wall studs, make sure that mounting screws are anchored into the center of the studs. The use of a stud finder is highly recommended.
- Over-tightening can cause damage to the screws or screw holes. This greatly reduces their ability to hold the weight load.
- This product contains small items that may be a choking hazard. Keep away from children!
- This product is intended for indoor use only. Using this product outdoors could lead to injury or damage to property.

Component Checklist

IMPORTANT: If any items are missing or damaged or you have questions, please contact support@cablematters.com



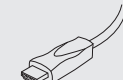
wall plate (x1)
A



adapter bracket (x2)
B



bubble level (x1)
C



6 ft HDMI cable (x1)



cable tie (x10)

Package M



M6x30 (x4)
M-A



M8x30 (x4)
M-B



M8x50 (x4)
M-C



D8 washer (x8)
M-D

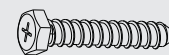


small spacer (x8)
M-E



big spacer (x8)
M-F

Package W



ST6.3x55 (x4)
W-A

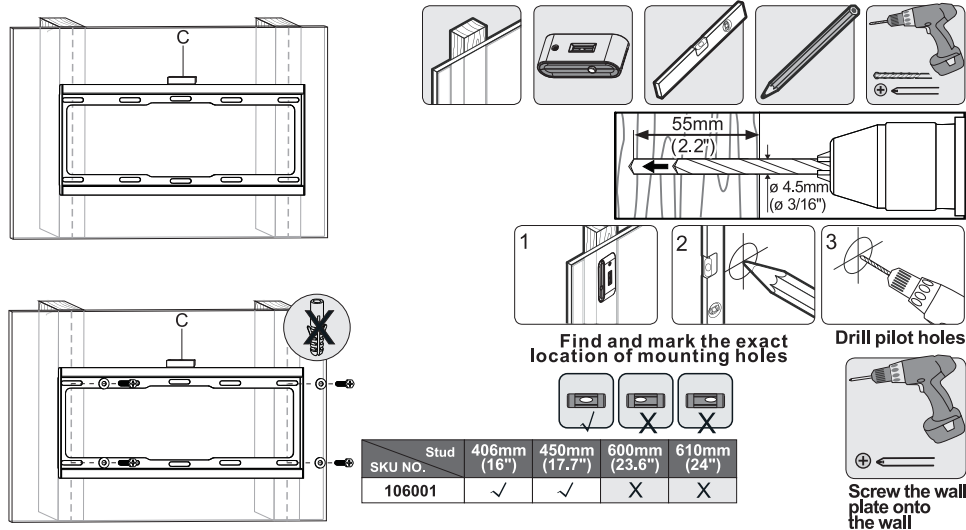


concrete anchor (x4)
W-B

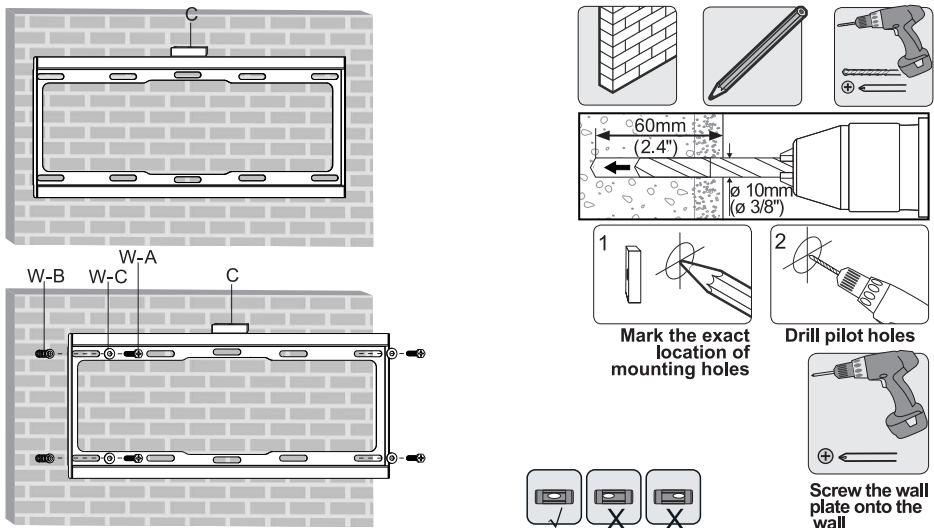


D6 washer (x4)
W-C

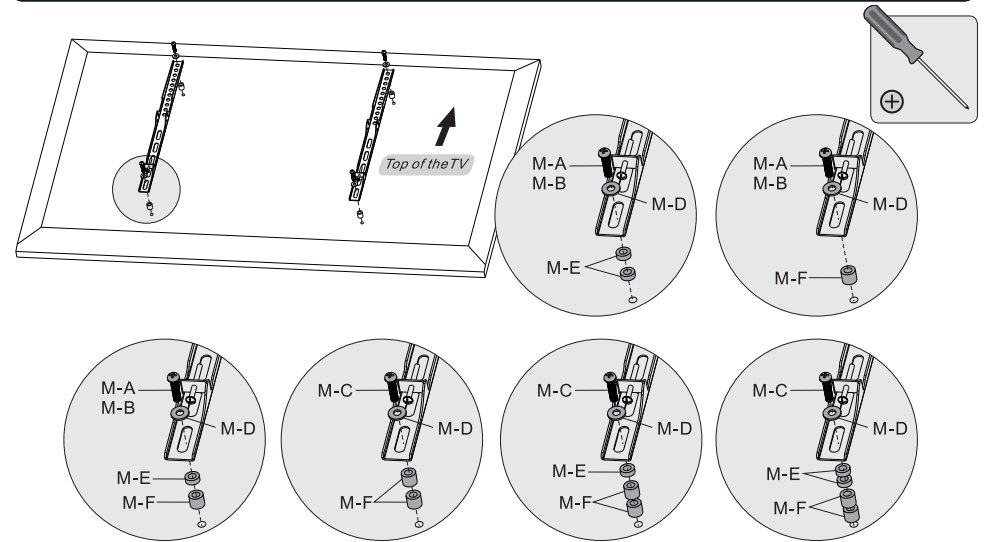
1a. For Wood Stud Wall Mounting



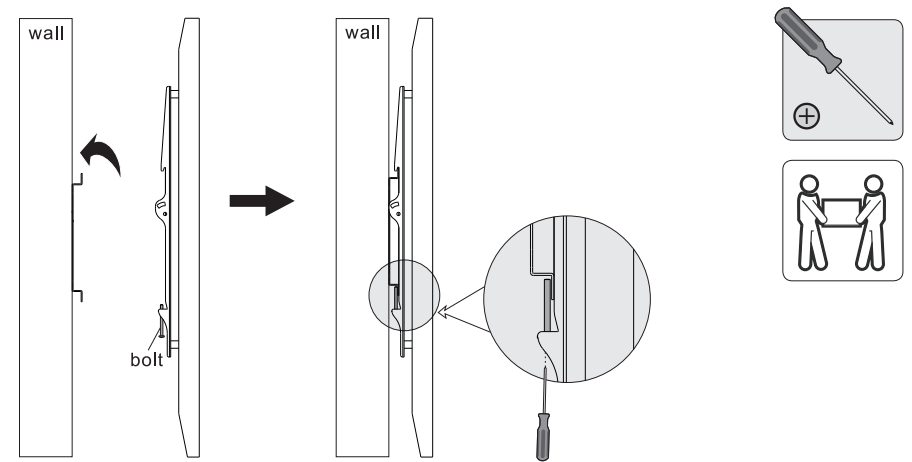
1b. For Solid Brick and Concrete Mounting



2. Installing the Adapter Brackets



3. Hanging the TV onto the Wall Plate



Maintenance

- Check that the bracket is secure and safe to use at regular intervals(at least every three months).
- Please contact support@cablematters.com if you have any questions.

Copyright and Trademarks

Specifications are subject to change without notice. Cable Matters is a registered trademark or trademark of Cable Matters Inc. All rights reserved.

This manual may make reference to trademarks, registered trademarks, and other protected names and/or symbols of third-party companies not related in any way to Cable Matters. Where they occur these references are for illustrative purposes only and do not represent an endorsement of a product or service by Cable Matters, or an endorsement of the product(s) to which this manual applies by the third-party company in question. Regardless of any direct acknowledgement elsewhere in the body of this document, Cable Matters hereby acknowledges that all trademarks, registered trademarks, service marks, and other protected names and/or symbols contained in this manual and related documents are the property of their respective holders.

Warranty Information

This product is backed by a limited one-year warranty. In addition, Cable Matters warrants its products against defects in materials and workmanship for the periods noted, following the initial date of purchase. During this period, the products may be returned for repair, or replacement with equivalent products at our discretion. The warranty covers parts and labor costs only. Cable Matters does not warrant its products from defects or damages arising from misuse, abuse, alteration, or normal wear and tear.

Limitation of Liability

In no event shall Cable Matters Inc. (including their officers, directors, employees or agents) be liable for any damages (whether direct or indirect, special, punitive, incidental, consequential, or otherwise), loss of profits, loss of business, or any pecuniary loss, arising out of, or related to the use of this product exceeding the actual price paid for the product. Some states do not allow the exclusion or limitation of incidental or consequential damages. If such laws apply, the limitations or exclusions contained in this statement may not apply to you.

Customer Support and Contact Information

Cable Matters offers lifetime technical support as an integral part of our commitment to provide industry leading solutions. Email us with questions at support@cablematters.com.